



DISCOVER THE INFINITE LUXURY

Can luxury be infinite? The answer is - Ananta, the 4 BHK ultra-luxurious apartments, designed to deliver everything you ever desired, because there is no full stop to desire and luxury, they are infinite!

Pramukh Group presents its next star symbol of limitless luxury that will give you the amenities and designs that have 'A Class Of Its Own', and will make you fall in love with your space.

Ananta

4 bhk fine living



“अनंता”

Ananta is a Sanskrit term which means 'endless' or 'limitless'.
That is what Ananta is - a sphere of endless luxury!

The idea here is to give enriching living experience to all who choose design and quality. This ultra-luxurious living space has no limit for luxury, and that is why we have not kept any limit in providing!

THE ENDLESS GREENS UNDER THE ENDLESS BLUES

The abundant greenery under the limitless sky will be complimentary with a large landscape garden, to enhance the beauty and leisure of your dream home.











DESIGNER AND EXCLUSIVE LANDSCAPING



LUXURIOUS ENTRY PLAZA



DESIGNER CONCIERGE AND WAITING AREA





RECREATE WITH RECREATION

Change is constant, and so is recreating new moments in life. A well-designed environment of Ananta, will offer you time and space to create unlimited moments with yourself and your loved ones. You can relax by taking a dip in the pool, working out, enjoying a movie or exploring new bonds over a plate of a hot barbequed dish!



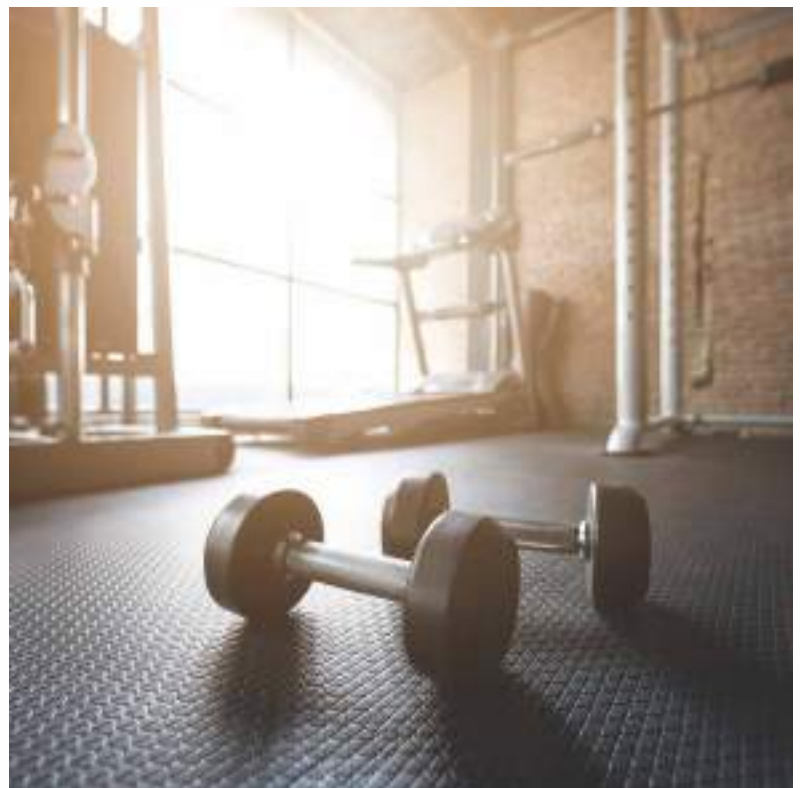
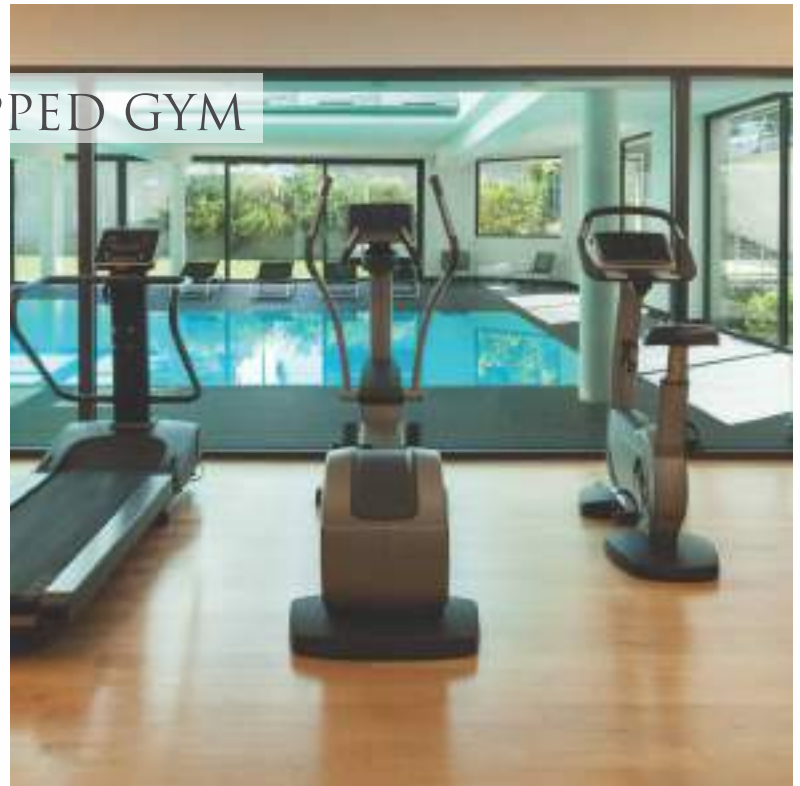
DESIGNER INDOOR AND OUTDOOR PLAY AREA



FIRST IN CLASS THEMED SPA GARDENS ON TERRACE



WORLD CLASS FULLY EQUIPPED GYM



ANANTA

Located in one of the most popular and developing areas of Surat, Ananta is way more than amenities and luxury. It is the standard you craved for!

The entire amenity area on ground floor is vehicle free and landscaped along with adding a pinch of green here and there. Ananta has four towers facing the inside common landscaped area, with multiple units having an additional view of the road. Along with the mesmerizing view, there is enough natural light, peace and belongingness that will fulfil all your infinite wishes.

AMENITIES

SWIMMING POOL | KIDS POOL | SUN DECK | BBQ DECK | GATHERING PAVILION
GYMNASIUM | INDOOR & OUTDOOR GAMES FOR ALL AGE GROUP | SOCIAL CLUB
RECREATIONAL SPACE | JUICE BAR | DESIGNER LANDSCAPE | SPA GARDEN

GROUND FLOOR PLAN

LEGEND

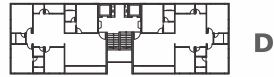
- 01 Entry / Exit
- 02 Security Cabin
- 03 Pickup Stand
- 04 Entrance Foyer
- 05 Meter Space
- 06 Society Office
- 07 Kids Club
- 08 Banquet Hall
- 09 Social Club
- 10 Gym
- 11 Change Rooms For Boys
- 12 Change Rooms For Girls
- 13 Tropical Plantation With Swing Trail
With Reflexology Pathway
- 14 Lifting Deck+Setting+
Shade Loving Plantation
- 15 Swimming Pool
- 16 Sun Deck
- 17 Lily Pond
- 18 Jogging Track
- 19 Multipurpose Court
- 20 Gazebo
- 21 Party Lawn
- 22 Skating Rink
- 23 Kids Out Door Play Area
- 24 Senior Citizen Area
- 25 Transformer Space
- 26 Aroma Garden
- 27 Semi Covered Deck
- 28 Entrance Canopy
- 29 Two Wheeler Parking



TYPICAL
FLOOR PLAN



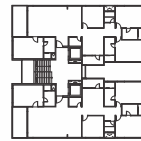
4 BHK TYPICAL PLAN



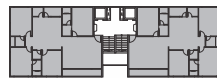
D



C



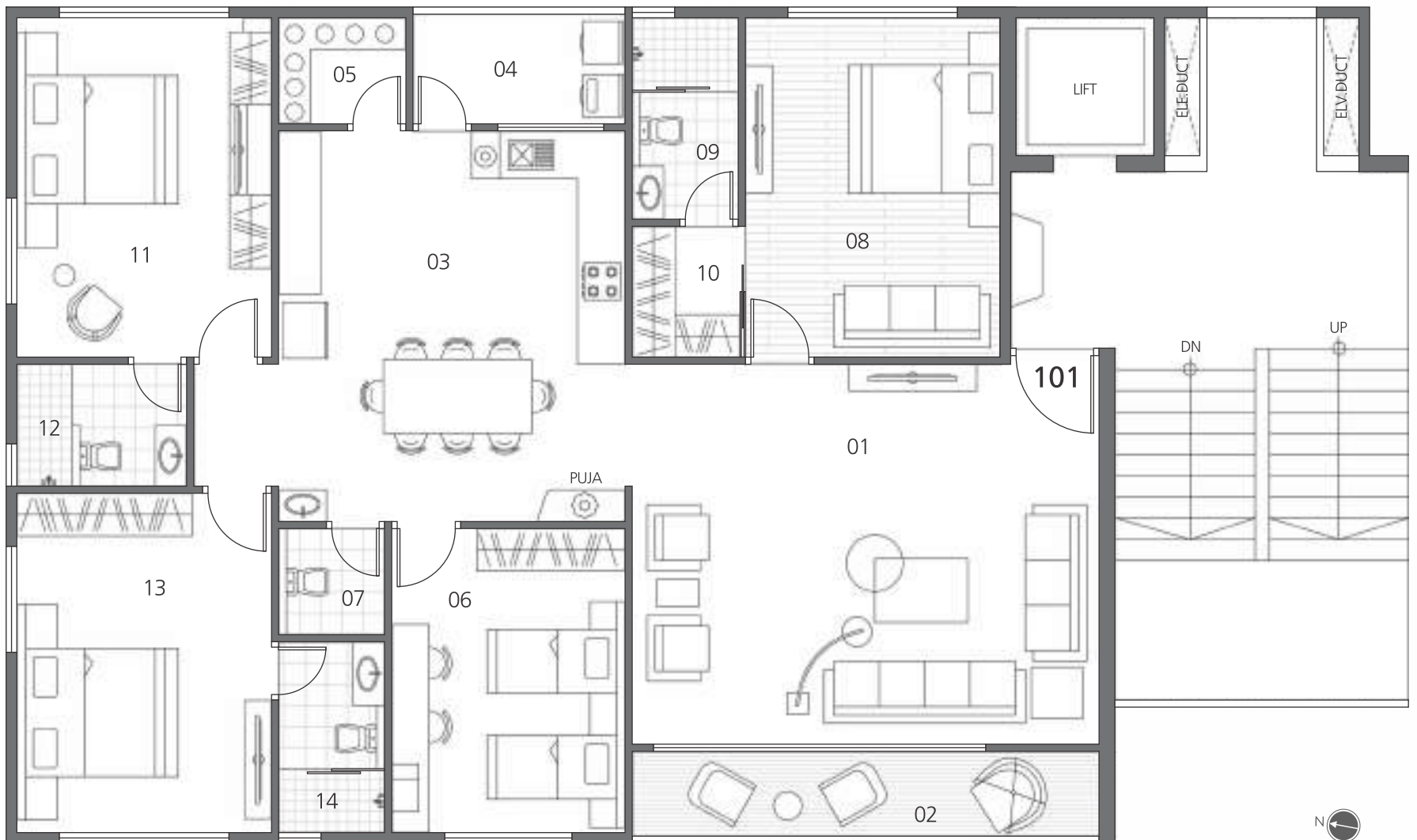
B



A

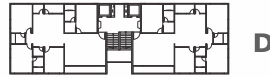
BLOCK- A

01	LIVING ROOM	22' 0" X 18' 0"
02	DECK	22' 0" X 4' 0"
03	KITCHEN & DINING	16' 3" X 18' 6"
04	WASH	10' 0" X 5' 3"
05	STORE	6' 0" X 5' 0"
06	KIDS BEDROOM	11' 0" X 14' 3"
07	C. TOILET	5' 0" X 5' 0"
08	M. BEDROOM-01	12' 0" X 16' 0"
09	A. TOILET-01	5' 0" X 9' 6"
10	DRESS	5' 0" X 6' 3"
11	M. BEDROOM-02	12' 0" X 16' 0"
12	A. TOILET-02	8' 6" X 5' 9"
13	M. BEDROOM-03	12' 0" X 16' 0"
14	A. TOILET-03	5' 0" X 9' 0"

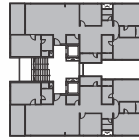


4 BHK TYPICAL PLAN

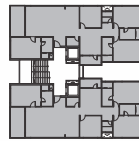
BLOCK- B & C



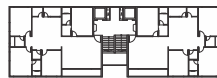
D



C



B



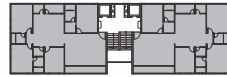
A

01	VESTIBULE	7' 0" X 5' 4"
02	LIVING ROOM & DINING	30' 0" X 17' 0"
03	DECK	8' 0" X 17' 3"
04	KITCHEN	12' 0" X 15' 0"
05	WASH	12' 0" X 5' 0"
06	STORE	7' 0" X 5' 0"
07	KIDS BEDROOM	12' 0" X 12' 0"
08	C. TOILET	6' 0" X 6" 0"
09	M. BEDROOM-01	17' 0" X 12' 0"
10	A. TOILET-01	6' 6" X 12' 0"
11	M. BEDROOM-02	16' 0" X 12' 0"
12	A. TOILET-02	6' 0" X 13' 6"
13	M. BEDROOM-3	16' 0" X 12' 0"
14	A. TOILET-3	12' 6" X 6' 3"

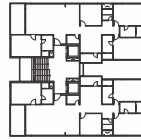


4 BHK TYPICAL PLAN

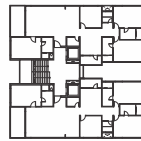
BLOCK-D



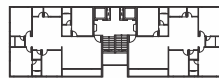
D



C

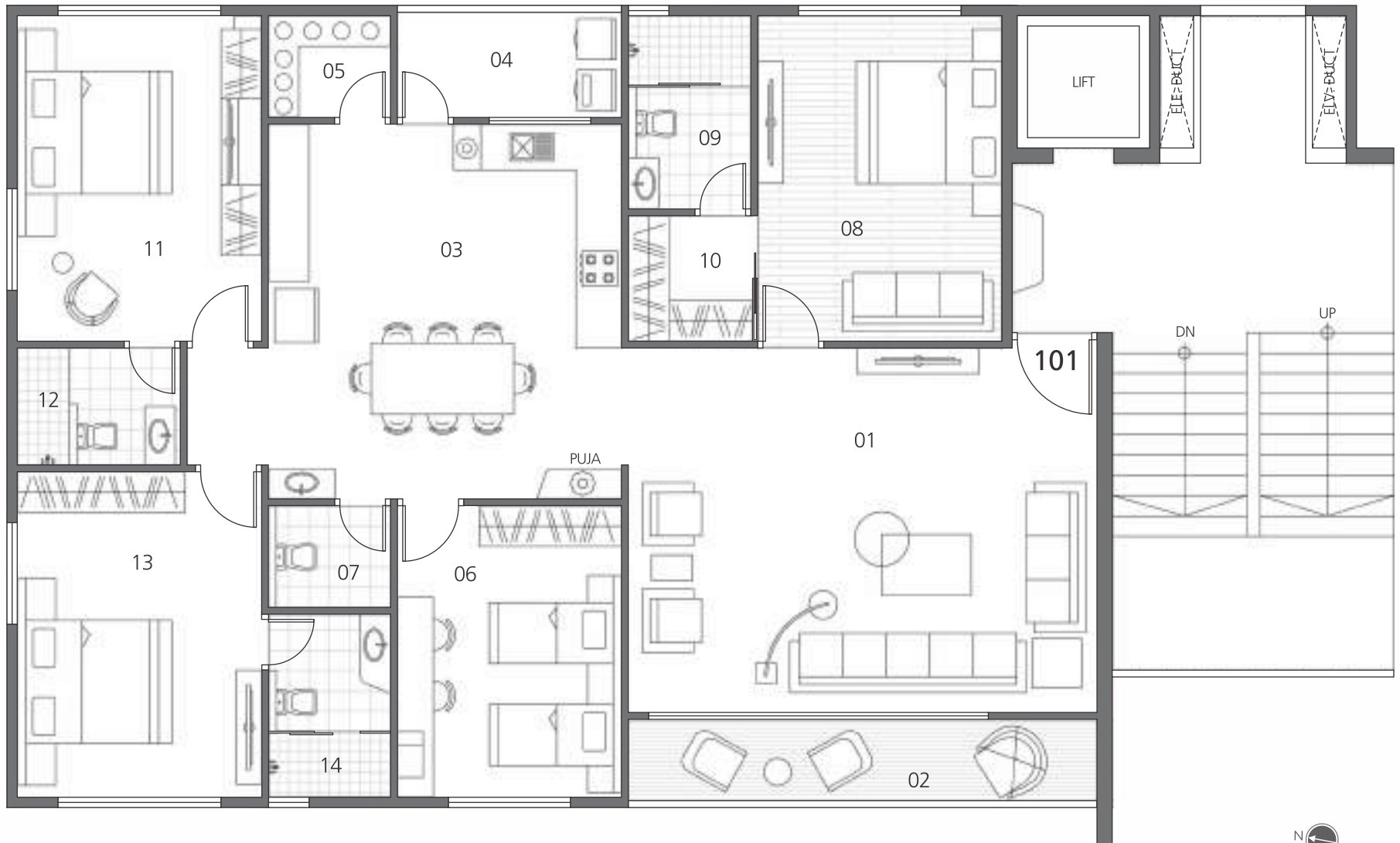


B



A

01	LIVING ROOM	23' 0" X 18' 0"
02	DECK	23' 0" X 4' 0"
03	KITCHEN & DINING	17' 3" X 18' 6"
04	WASH	11' 0" X 5' 3"
05	STORE	6' 0" X 5' 0"
06	KIDS BEDROOM	11' 0" X 14' 3"
07	C. TOILET	6' 0" X 5' 0"
08	M. BEDROOM-1	12' 0" X 16' 0"
09	A. TOILET-1	6' 0" X 9' 6"
10	DRESS	6' 0" X 6' 3"
11	M. BEDROOM-2	12' 0" X 16' 0"
12	A. TOILET-2	8' 6" X 5' 9"
13	M. BEDROOM-3	12' 0" X 16' 0"
14	A. TOILET-3	6' 0" X 9' 0"

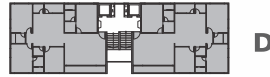


TERRACE
LAYOUT PLAN



TERRACE LAYOUT PLAN

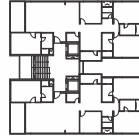
BLOCK-D



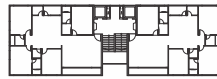
D



C

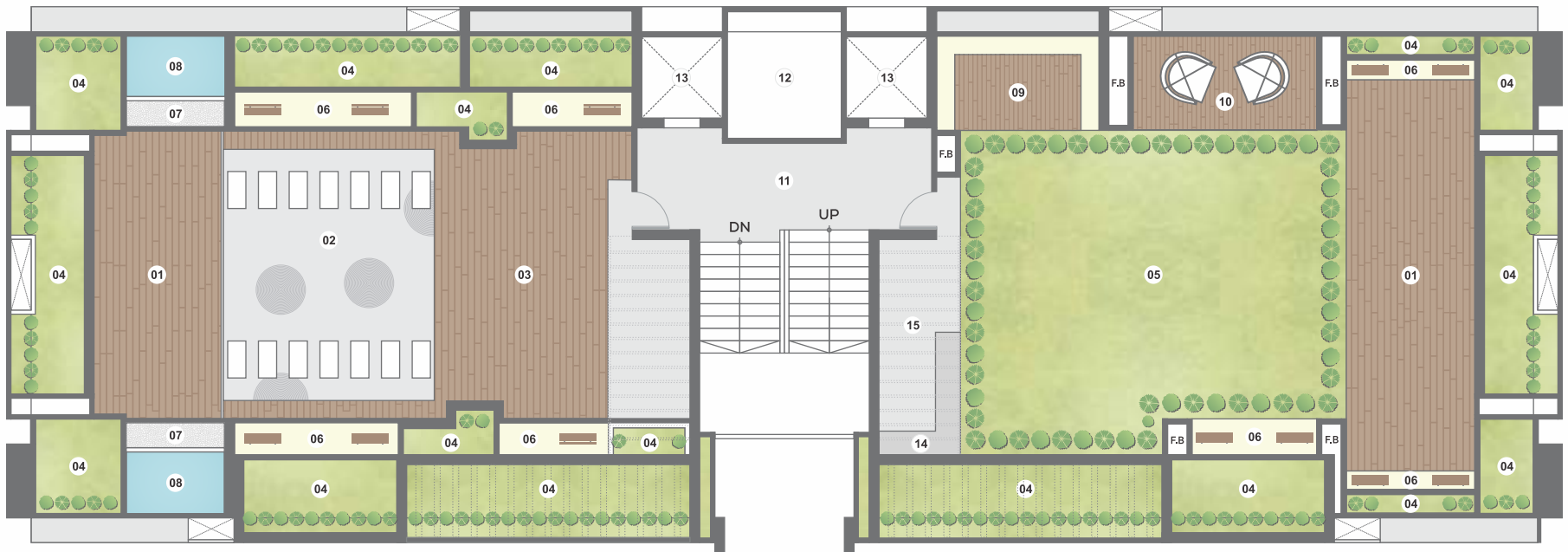


B



A

01. WOODEN DECK COVERED WITH PARGOLA
02. PEBBLED FLOOR ZEN GARDEN
03. YOGA DECK
04. PLANTER
05. ARTIFICIAL LAWN
06. SITTING
07. PEBBLES
08. FOUNTAIN WITH SCULPTURE
09. WOODEN DECK WITH SITTING
10. WOODEN DECK
11. PASSAGE 23'-9" X 8'-3"
12. FIRE WATER TANK 3.05 X 5.5 X 2.35
20000 LTR CAPACITY
13. LIFT 6'-6" X 6'-6"
14. BARBEQUE PLATFORM
15. PANTRY



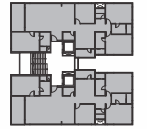
TERRACE LAYOUT PLAN



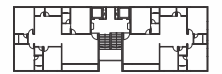
D



C



B



A

BLOCK- B & C

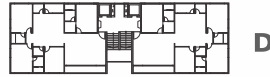


- 01. WOODEN DECK COVERED WITH PARGOLA
- 02. PEBBLED FLOOR ZEN GARDEN
- 03. YOGA DECK
- 04. PLANTER
- 05. ARTIFICIAL LAWN
- 06. SITTING
- 07. PEBBLES
- 08. FOUNTAIN WITH SCULPTURE
- 09. WOODEN DECK WITH SITTING
- 10. WOODEN DECK
- 11. PASSAGE
17'-6" X 27'-3"
- 12. FIRE WATER TANK
2.06 X 4.01 X 2.35
19400 LTR CAPACITY
- 13. LIFT
6'-6" X 6'-6"
- 14. BARBEQUE PLATFORM
- 15. STONE CLADDING DECK



TERRACE LAYOUT PLAN

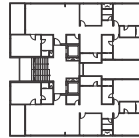
BLOCK- A



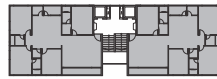
D



C



B



A

- 01. WOODEN DECK COVERED WITH PARGOLA
- 02. PEBBLED FLOOR ZEN GARDEN
- 03. YOGA DECK
- 04. PLANTER
- 05. ARTIFICIAL LAWN
- 06. SITTING
- 07. PEBBLES
- 08. FOUNTAIN WITH SCULPTURE
- 09. WOODEN DECK WITH SITTING
- 10. WOODEN DECK
- 11. PASSAGE 23'-9" X 8'-3"
- 12. FIRE WATER TANK 3.05 X 5.5 X 2.35
20000 LTR CAPACITY
- 13. LIFT 6'-6" X 6'-6"
- 14. BARBEQUE PLATFORM
- 15. PANTRY



SPECIFICATIONS AND FINISHES

STRUCTURE

SHELL:

RCC frame structure with masonry partitions. The floor to floor height shall be about 10' 6".

OUTER WALL FINISHES:

Combination of long lasting & water resistant textured surfaces and glass railings.

PLUMBING

All water supply shall be in cPVC & drainage lines shall be in PVC. Premium Quality plumbing fixtures (Kohler, Jaquar or equivalent) shall be provided for bathrooms or any other area.

WATER SUPPLY

The water supply system shall be based on a hydro-pneumatic system..

WINDOWS

Premium quality, noise free sliding anodized aluminium and glass window system.

DOORS

Main Door - Decorative Shutters with Melamine Polish and numeric lock with handle

Internal Doors - Laminated Flush Doors with motorised lock.

HVAC

Leading Brand Air Conditioners Daikin/mitsubishi/ogeneral Or Equivalent.

ELEVATORS

Premium Quality Elevators (Kone, Schindler or equivalent brands) shall be provided with automatic doors and SS finish inside the cabins, with multi-beam sensors for door operation.

FLOORING & DADO

LIVING, DINING KITCHEN:

Flooring: Imported Italian marble laid with paper joints and finished with 8 coats polish.

Walls: Birla White Putty

MASTER BEDROOM:

Flooring: Premium quality wooden flooring with seamless joints for monolithic look.

Walls: Birla White Putty

ALL OTHER BEDROOMS:

Modern Indian Tiles

Walls: Birla White Putty

STORE:

Flooring: Vitrified Tiles

Walls: Vitrified Tiles with Granite Shelves

DECK:

Flooring: Wooden Type Vitrified Flooring

Walls: Exterior Grade Birla Putty Finish

KITCHEN PLATFORM

Granite Marble Top with Modern Indian Tiles for dado Finishes.

TOILETS:

All toilets to have Modern Indian Tile Flooring and dado upto lintel level.

LOCATION MAP



ABHVA GAM



Site Address

Ananta, FP 50/2, Besides C B Patel Health Club, Vesu, Surat

Corporate Address

Pramukh Group, Orbit 1, 11th Floor, Punagam Saroli BRTS Junction,
Canal Corridor, Punagam, Surat

Booking Contact

+91 7574870757 / +91 9978986778

inquiry@mypramukh.com www.pramukh.co.in

— CREDITS —

Architects

Adda Architects, Surat

Structural Consultants

Technocrat Consultants, Surat

PMC

Studio 13, Surat

Landscape Architects

Earthscapes, Ahmedabad

MEP Consultants

Malwawala Engineering Services Pvt. Ltd, Mumbai

AWARD WINNING PAST PROJECTS-SURAT

Aranya



2017 - Mid Segment project residential
2018 - Excellence In Delivery Award

Orbit 1



2019 - Excellence
In Delivery Award - Orbit 1

Orbit 2



2020 - Excellence
In Delivery Award - Orbit 2

UNDER-CONSTRUCTION

ARANYA II

2 & 3 BHK LUXURY HOMES

Godadara - Surat

Vivanta

3 BHK Exclusive Residences

Vesu - Surat

ORBIT

PLAZA

Godadara - Surat



SOUTH GUJARAT'S LEADING REAL ESTATE DEVELOPER

Derived from the word 'Prime', Pramukh was established in the year **1993**, and is on the path of delivering iconic and class apart projects since then. Pramukh group has been providing aesthetically appealing and comfortable properties in Surat, Vapi, Silvassa and Umbergaon.

Over the last **25 years**, we have enjoyed the patronage of over **12,000+** families, with more than **12 million Sq. Ft.** constructed floor space. Currently, **6700+** homes i.e. **8 million Sq. Ft.** area is under development.

Welcome To 'A Class Of Its Own'



12 MILLION+
Sq. Ft. Delivered



9 ONGOING PROJECTS
In 3 Cities (Surat, Vapi, Silvassa)



8.4 MILLION+
Sq. Ft. Under Development



12,000+
Homes Delivered



6700+
Homes In Progress



P R A M U K H

A CLASS OF ITS OWN

SPECIAL NOTES

Pictures shown are for illustration purpose only. Actual finishes may vary due to enhancement. All rights reserved with developers to make any changes in the scheme and all members shall be abide such changes. Only internal changes shall be allowed with prior permission from developers and shall be charged extra. This brochure is for illustration purpose only & not a legal document. The dimension mentioned are approximate.