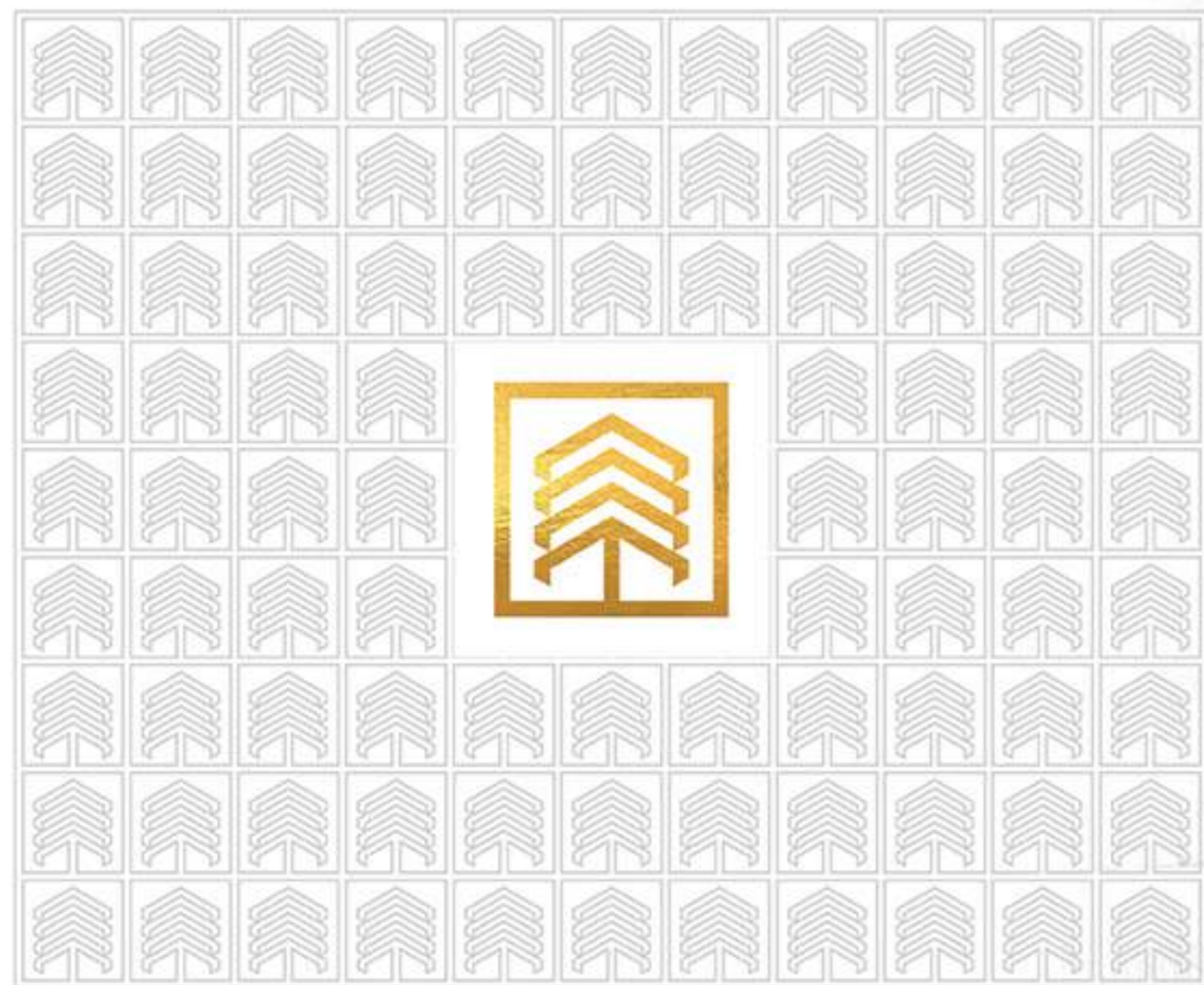


Avadh
HABITAT

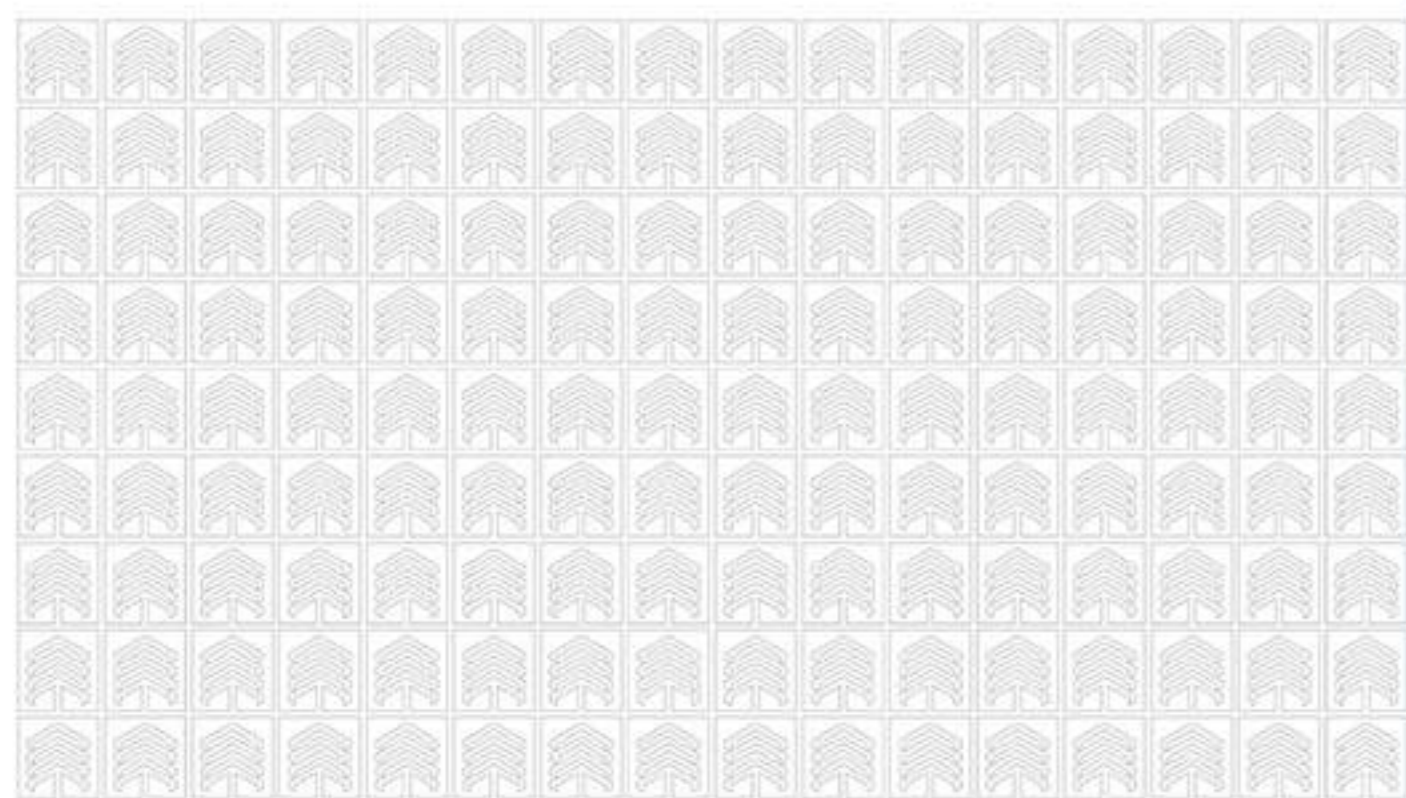


Feel the calmness in every angle of Avadh Habitat because it's designed for an extraordinary living like nothing on earth with nature like, Garden and Fresh air.



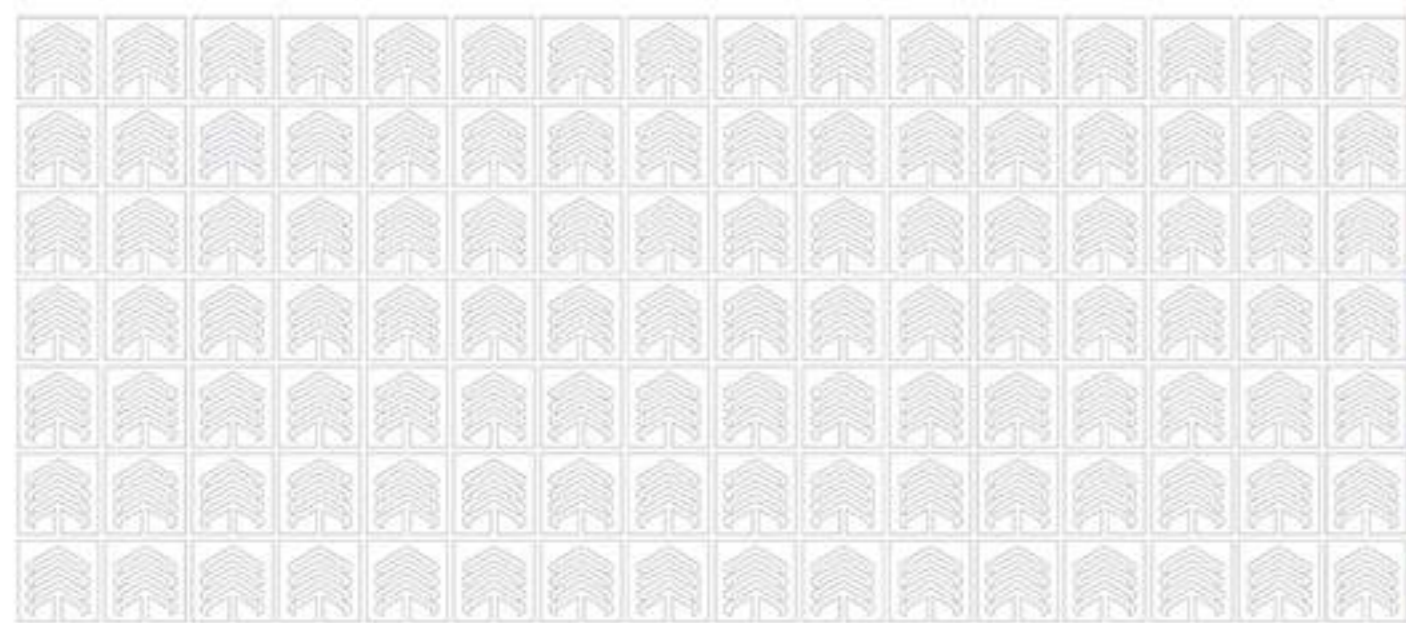
Avadh
HABITAT

— 3 & 4 BHK —
ULTRA LUXURIOUS



Welcome to the world of luxurious living

This avenue does not provide homes for aspiring people, but a
lifestyle to live higher on a pedestal.

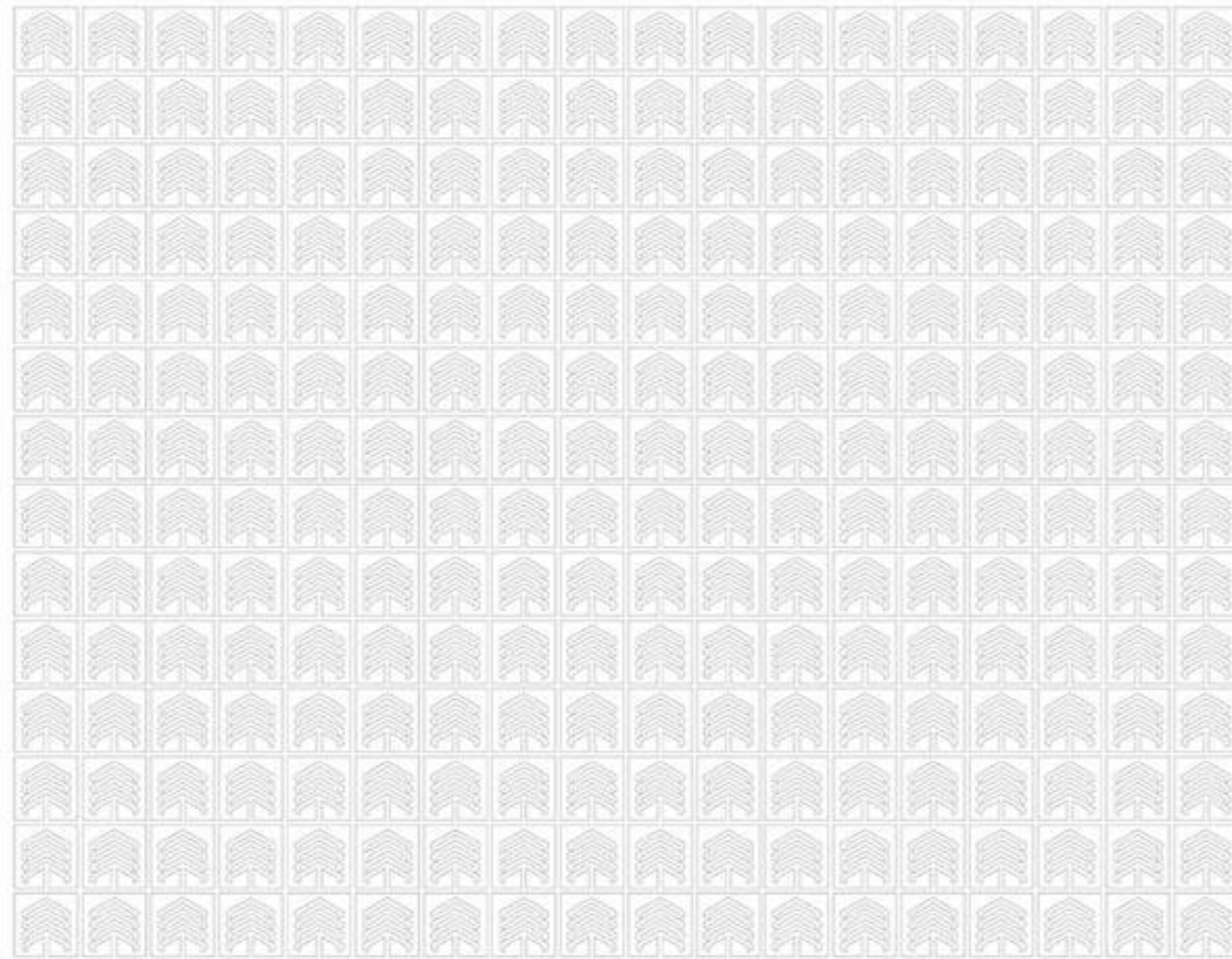




ABOUT US :

Avadh is the pioneer of innovative edifices featuring reputed construction sites in Surat, Ahmedabad, Navsari, Bardoli, Amreli and Vapi. Right from the inception in Amreli, our gigantic residential projects along with some ultra-modern commercial spaces have been the talk of the town.

We have a strong reputation in designing lifestyle with our ventures in providing services in the F&B industry, Home Appliances sector along with Real Estate and have been successful and path-breaking to say the least

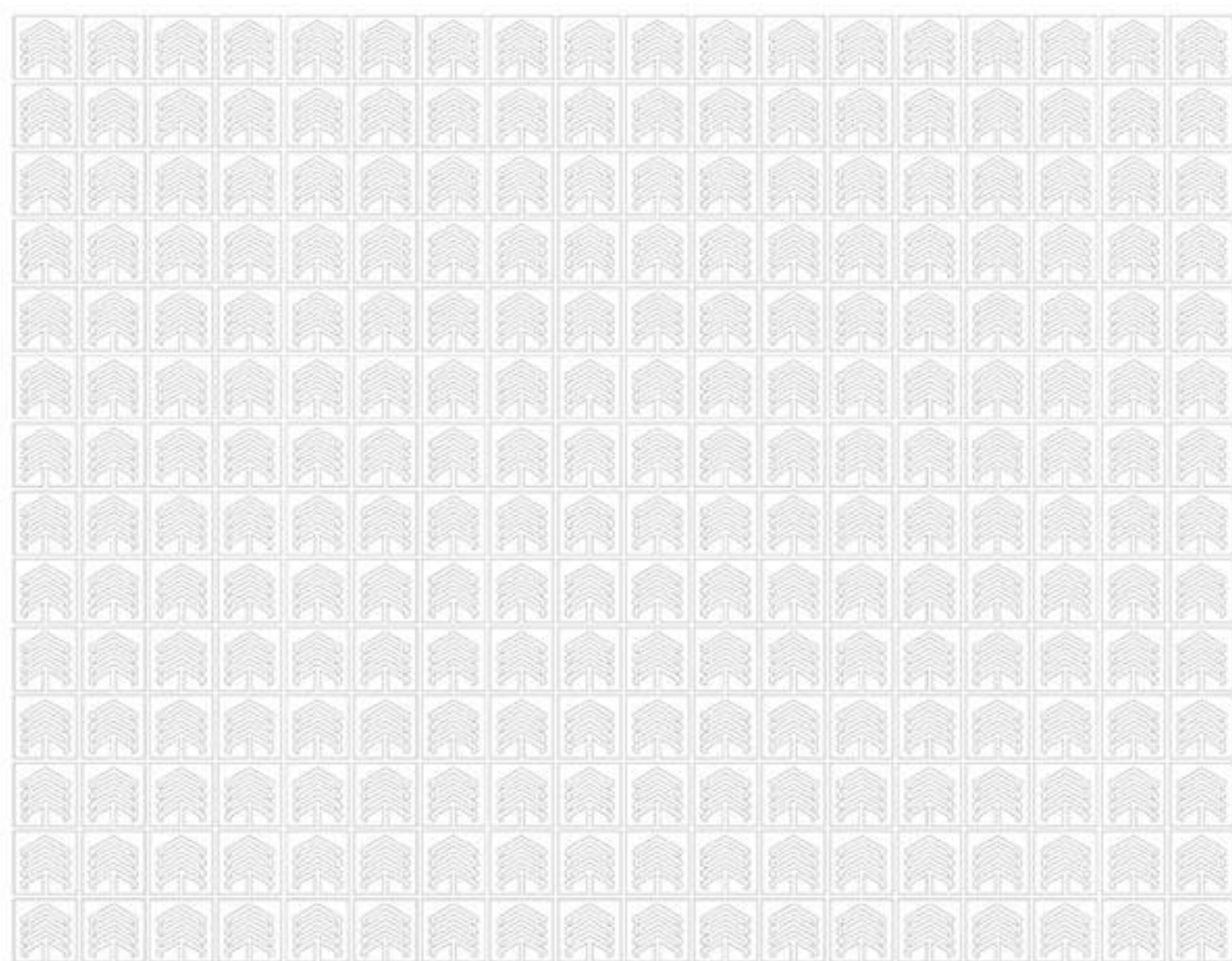


Designed for natural living

The light, energy, ambience and the freshness, Avadh Habitat combines extraordinary natural resources



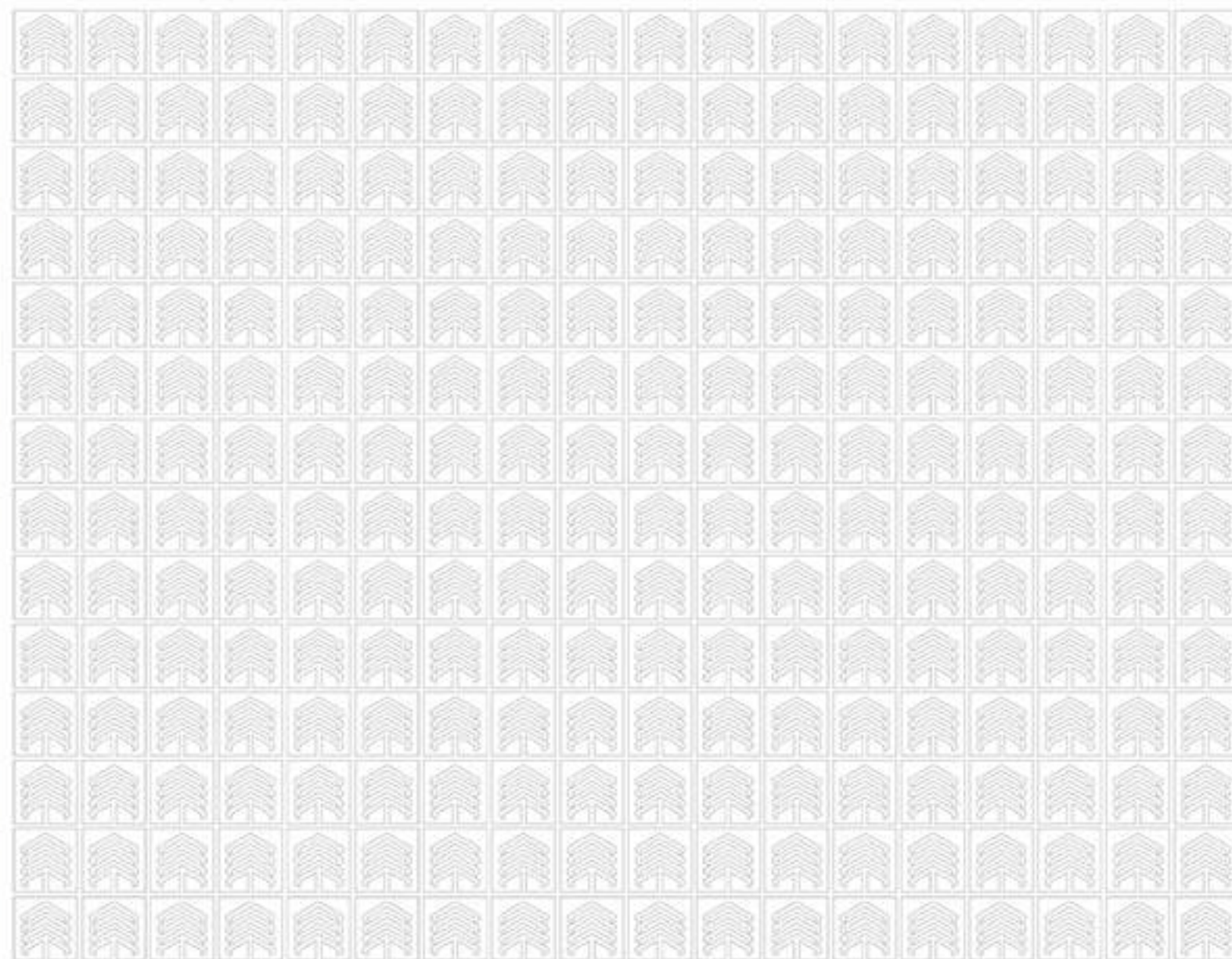




A modest journey of your dream

Class and luxury rule in the ambience of these homes, as the residents will love to aim high in every aspect





Begin your story here

It is a feeling when your residence takes a special place in your heart Avadh habitat gives towering structure, modern amenities and sound support





Elite and exquisite

Life begins at the end of your comfort zone, come to life!



INDOOR AMENITIES



A.C. Gymnasium



Multipurpose Hall



Theater



Changing Room & Steam



Indoor Games (Card, Carom, Table Tennis Etc.)



Arcade Game



Kids Soft Play Area

OUTDOOR ACTIVITY



Acupressure Pathway



Water Body With Sculpture



Box Cricket



Temple / Derasar



Pet Park With Seating



Mini Golf



Skate Park



Pergola With Sofa Seating



Fun Pool



Bubble Fountain



Multipurpose Lawn



Gazebo



Outdoor Gym



Cafeteria



Lap Pool



Multipurpose Sports Court



Barbeque Area



Party Lawn



Kids Play



Swimming Pool

Safety :

- Gated campus with security cabin
- Full equipped firefighting system

Parking :

- Ground + one basement
- Reserved car parking
- Separate entry & exit ramp.

Security :

- CCTV camera at ground floor
- 24 X 7 human security service
- Intercom facility

Power Backup :

- Generator backup for lift, water pump & common light



Enjoy the togetherness in a natural environment made just for you.





It's time to relish a change – over in your style of living – a perfect blend of activities and facilities

SPECIFICATIONS

INTERNAL UNIT FINISHES

INTERNAL COMMON AREA FINISHES



POWER SUPPLY
• Three phase power supply from main LT line



GENERATOR BACK-UP (POWER BACK-UP)
• All common activity plus 2 points per flat



FLOORING
• Branded vitrified granamite flooring



KITCHEN
• Granite platform with SS sink



DOORS
• Wooden / granite frame with standard flush door



ELECTRIFICATION
• Sufficient concealed electrification points with Modular switches of ISI brands



LIFT CLADDING
• Granite / vitrified tile cladding



PASSAGE
• Vitrified tile in flooring design with lift cladding



ELEVATORS CONFIGURATION
• 2no. Auto door lift



SECURITY SYSTEM
• CCTV camera + intercom facility at foyer



WINDOWS
• Aluminum anodized section windows



PLUMBING
• Concealed plumbing with jaquar / grohe / kohler / simpolo Or equivalent make sanitary ware and C.P. fitting.



WALL FINISH
• Putty finish internal walls



TOILETS
• Vitrified tiles up to lintel level

EXTERNAL FINISHES



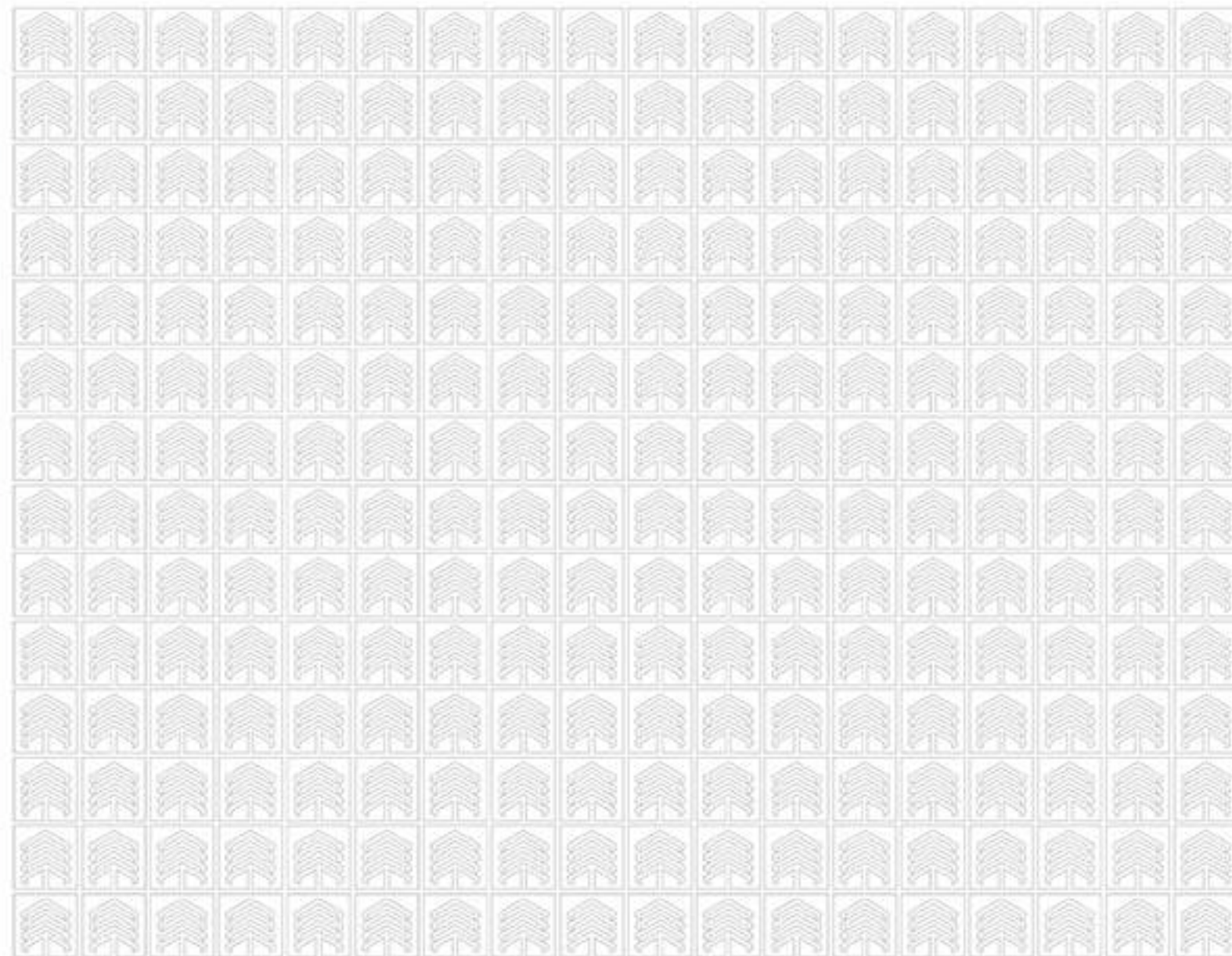
PLASTER
• Double coat mala finishes plaster



COLOR
• ICI weather shield max / Asian paint or equivalent male acrylic paint



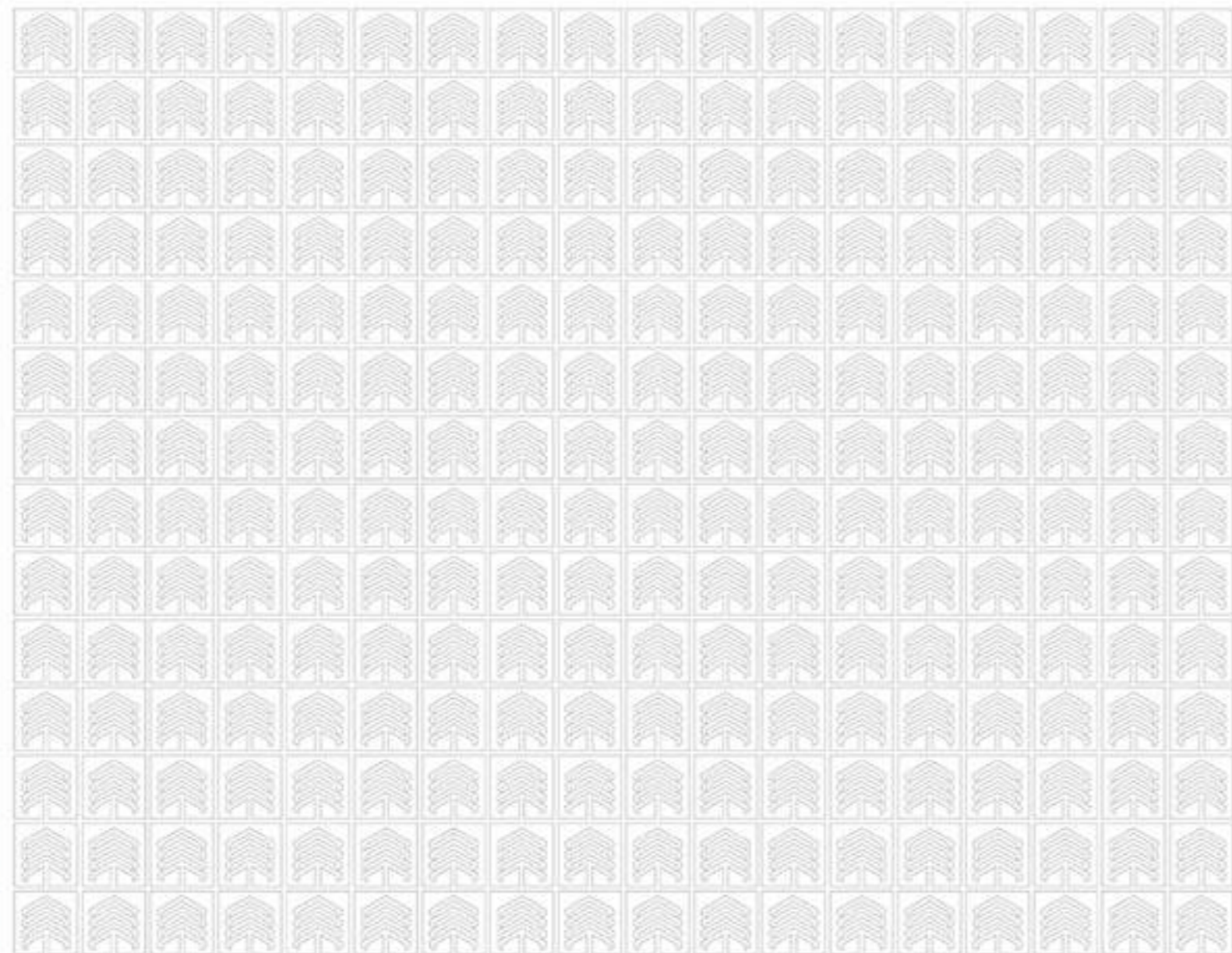
TERRACE
• Water proofing with china mosaic



Innovation from the ground to the sky

Say hello to the world of extravagant living where lives
harmony & tranquility





A landmark that speaks for itself

Experience the magnificence, the splendor, the richness
live the life you have truly earned





Blueprints



Ground floor plan



- 1. Main Entrance Gate
- 2. Security Cabin
- 3. Jogging Track
- 4. Box Cricket
- 5. Derasar
- 6. Sitting Area
- 7. Children Play Area
- 8. Temple
- 9. Golf Area
- 10. Skate Park
- 11. Walk Way
- 12. Party Lawn
- 13. Basket Ball
- 14. Multi Purpose Court
- 15. Arcade Games
- 16. Indoor Games
- 17. Kids Play Area
- 18. Multi Purpose Hall
- 19. Swimming Pool
- 20. Cafe Area
- 21. Gymnasium
- 22. Theater

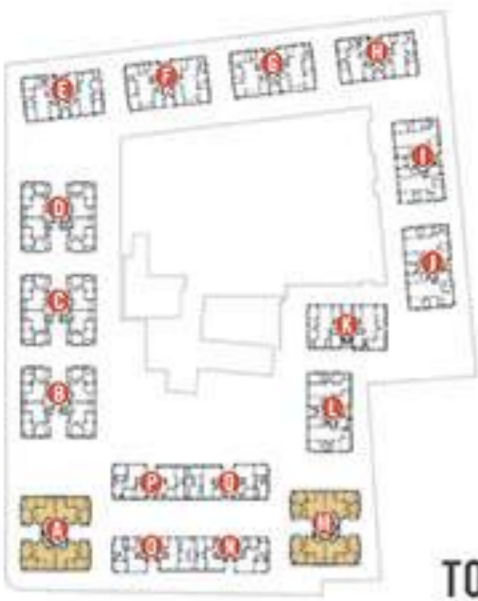


Typical floor plan



- 1. Acupressure Pathway
- 2. Water Body With Bubblebers
- 3. Cabana
- 4. Jogging Track
- 5. Sitting Area
- 6. Fun Pool
- 7. Lawn Area
- 8. Walk Way
- 9. Gazebo
- 10. Outdoor Gym And Yoga Area
- 11. Barbeque Area

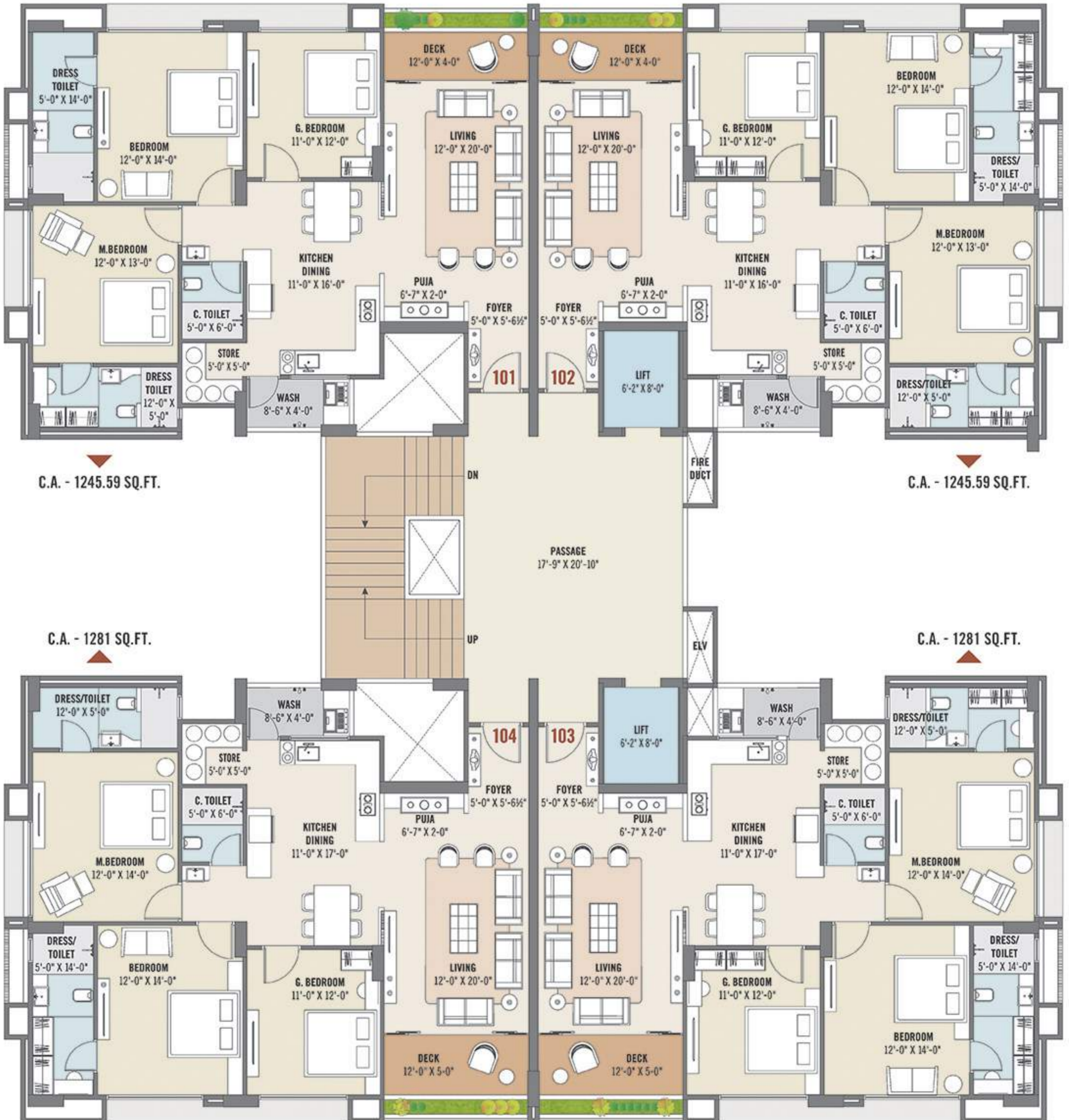


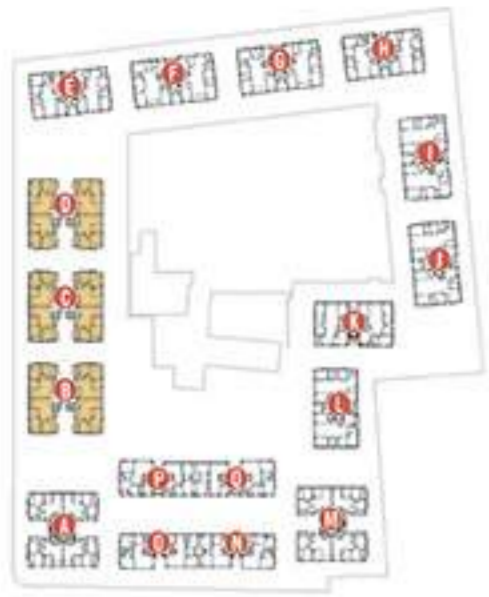


TOWER - A & M



3 BHK unit plan

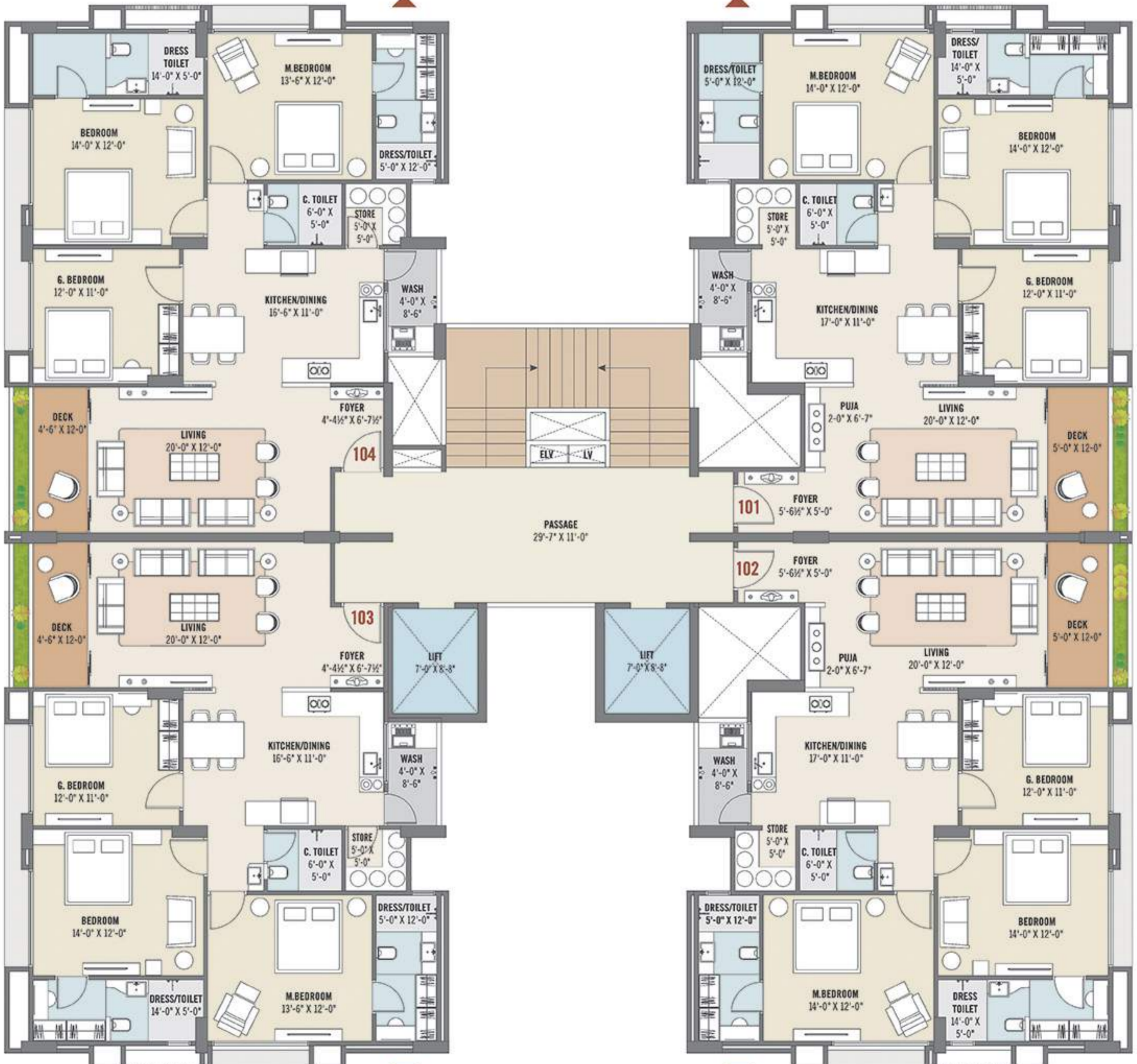




TOWER - B, C & D

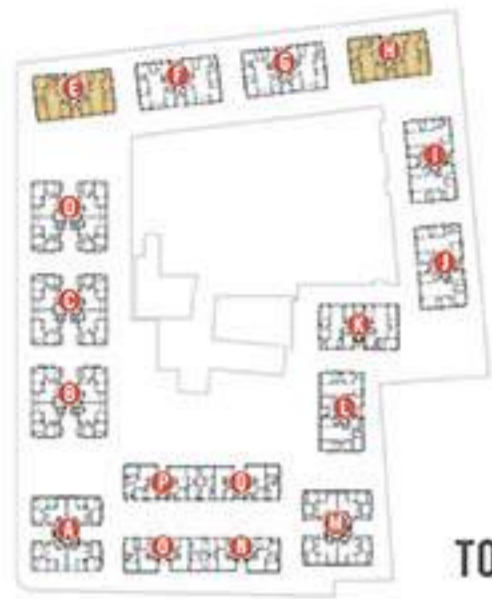
C.A. - 1267.25 SQ.FT.

C.A. - 1281 SQ.FT.



C.A. - 1267.25 SQ.FT.

C.A. - 1281 SQ.FT.

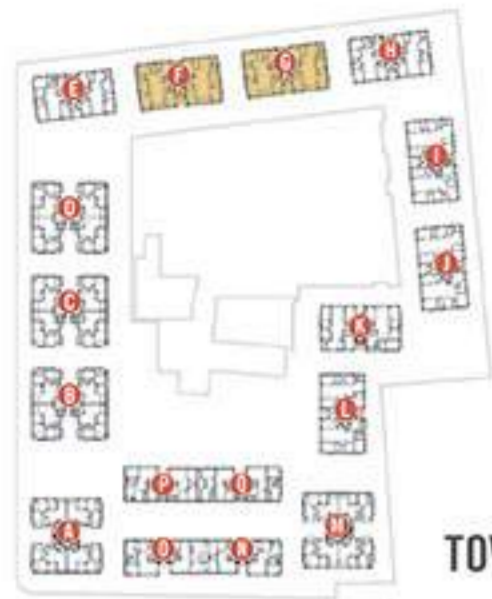


TOWER - E & H

C.A. - 1977.25 SQ.FT.

C.A. - 1952.50 SQ.FT.



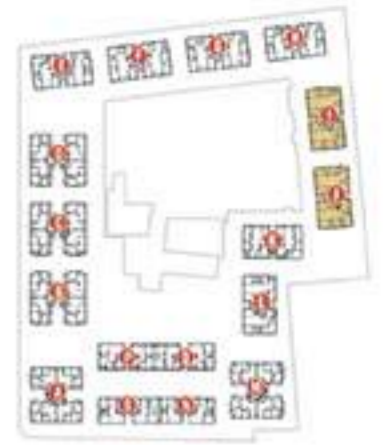


TOWER - F & G

C.A. - 2193.97 SQ.FT.

C.A. - 2197.41 SQ.FT.





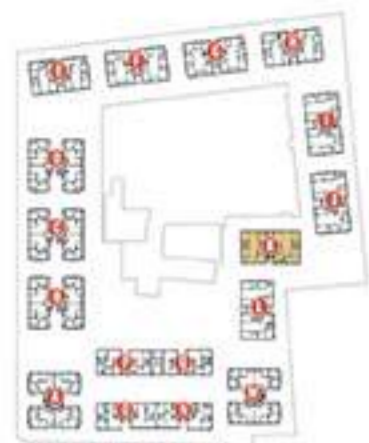
TOWER - I & J

► C.A. - 2197.55 SQ.FT.

► C.A. - 2171.76 SQ.FT.



4 BHK unit plan



TOWER - K

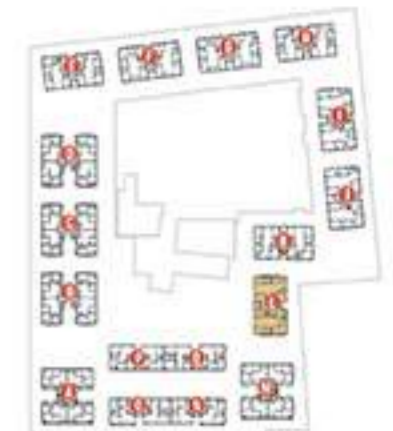


4 BHK unit plan



C.A. - 1975.75 SQ.FT.

C.A. - 1948.49 SQ.FT.



TOWER - L

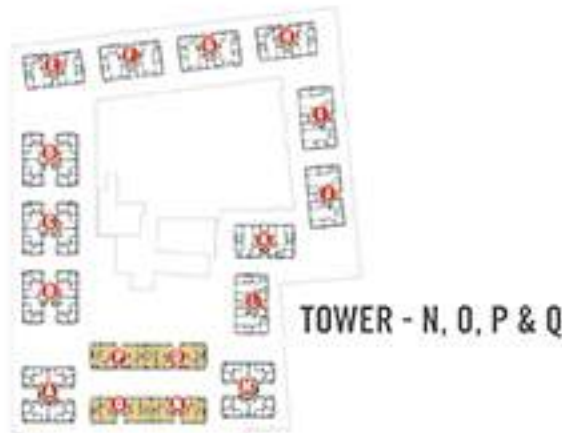


▶ C.A. - 1952.92 SQ.FT.

▶ C.A. - 1948.62 SQ.FT.



4 BHK unit plan



3 BHK unit plan (Typical floor)



C.A. - 1407.12 SQ.FT.

C.A. - 1352.38 SQ.FT.

C.A. - 1352.38 SQ.FT.

C.A. - 1407.94 SQ.FT.

VENTURE BY

 PROJECT : AVADH BUILDTECH

ARCHITECT

 At. Apurva Desai

STRUCTURAL DES.

 Vikas Patel
 MR. Structural

E-mail : sales@avadhprojects.com
 Website : www.avadhprojects.com

 Avadh
HABITAT

Site Address :
 Avadh Habitat, Opp Airport, off Dumas Road, B/H Avadh Utopia, Surat - 394550.

Contact : +91 97267 72000 | +91 97267 73000

Rera reg no : PR/GJ/SURAT/SURAT CITY/
SMC/RN8AA09908/180422 www.gujrera.gujarat.gov.in



NOTES :- This brochure is for private circulation only. By no means, it will form part of any legal contract.

NEAR BY LOCATION

- 
Metro
10.6 k.m.
- 
Hospital
71 k.m.
- 
Textile Market
17.2 k.m.
- 
Airport
3.0 k.m.
- 
DPS.
School
0.5 k.m.
- 
Diamond
Bourse
10.4 k.m.
- 
Surat Railway
Station
18.5 k.m.