



THE RIBERA
A RIVERSIDE PARADISE

Design - NED - 78787 54617

A Joint Venture By



Architect & Interior Designer

↑ AAYOJAN

Ar. Haresh Mahadevwal (B. Arch)
Surat

The Ribera

At Pdst - Hond

Nation Highway-8

Dist - Chikhli

Web: www.aangangroup.com

Inquiry: +91 99 24 311011 | +91 97 26-455666



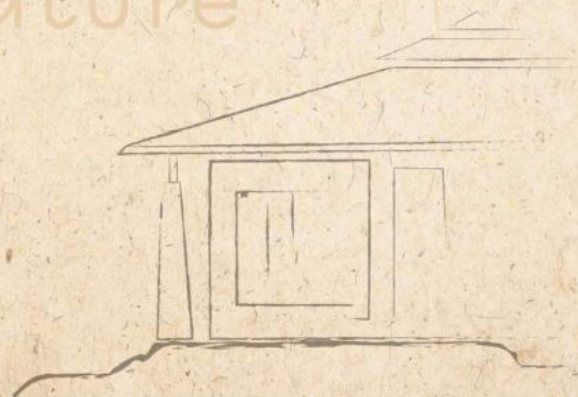
THE RIBERA
A RIVERSIDE PARADISE

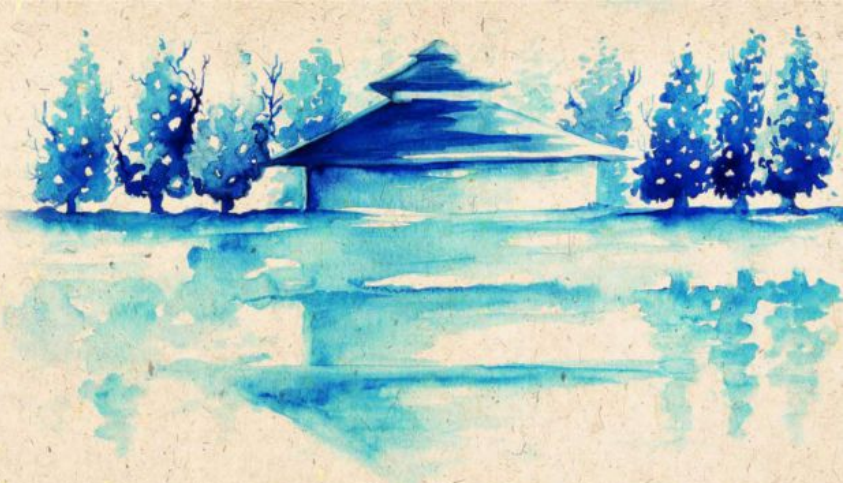
Welcome to
The Ribera





Brighten Up
Your Life With
Nature





A Grand Welcome

With artistic and magnificent entry gate, Ribera welcomes you to a new world of luxury living. An appearance that will mesmerize as soon as you enter. It is just not a place with wondrous entrance gate but as its name says "Ribera", a paradise situated at river bank, offers generous greetings to one and all. Ribera is a complete luxury to its residents.



Green Environment

More the Green Environment, Less the Pollution. Yes, this is something that anyone would certainly look for. A surrounding with lush green landscape, the flora in the premises will offer you an exceptionally awe-inspiring experience, which shall give you the look and feel of a majestic orchard of a lavish mansion.





Magnificent Living

Have the experience of complete imperialism at the Ribera. The facilities here will surely enhance your standard of living offering you special treats to Enjoy. With the perfect blend of water, air and land; Ribera offers you a comfortable living in the arms of Mother Nature.



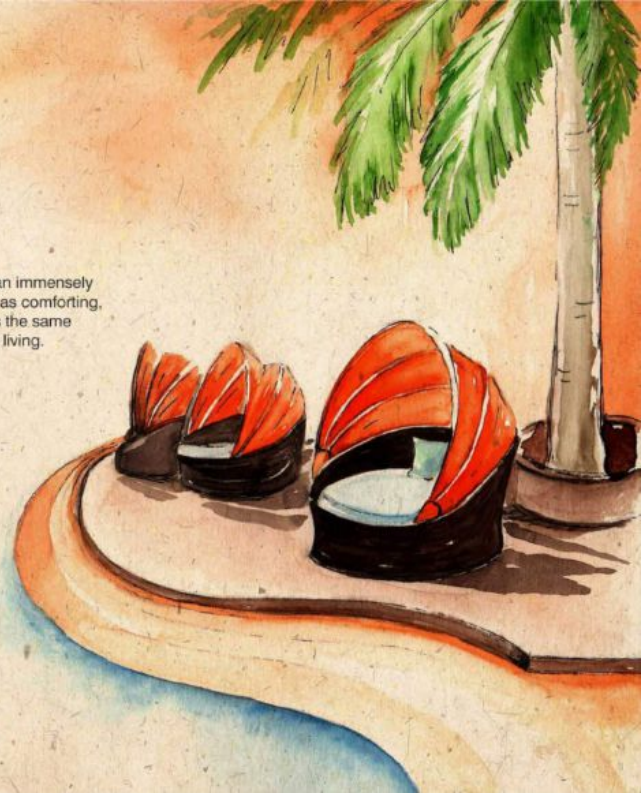




Floor Plan

Opulence Lifestyle

Offering you the extravagance that will lead you to an immensely opulence lifestyle. As luxury should be bright as well as comforting, and so should be the place we live. Ribera offers the same experience, a lifestyle that adds stars to your living.



Livingroom



Bedroom







The Layout Plan

The Layout Plan



PLOT NO.	AREA IN (sq. yd.)
01	2088.29
02	4277.21
03	4805.94
04	2295.57
05	1995.89
06	1761.05
07	1061.08
08	1114.66
09	1352.65
10	1348.09
11	1320.89
12	1365.13

Revised Plan

Plot No	Sq Yd
12A	651
12B	571
12C	469
12D	585
12E	500
12F	650
12G	650
12H	500
12I	529
12J	480
12K	529
12L	529
12M	650
12N	650
12O	485
12P	626
12Q	528

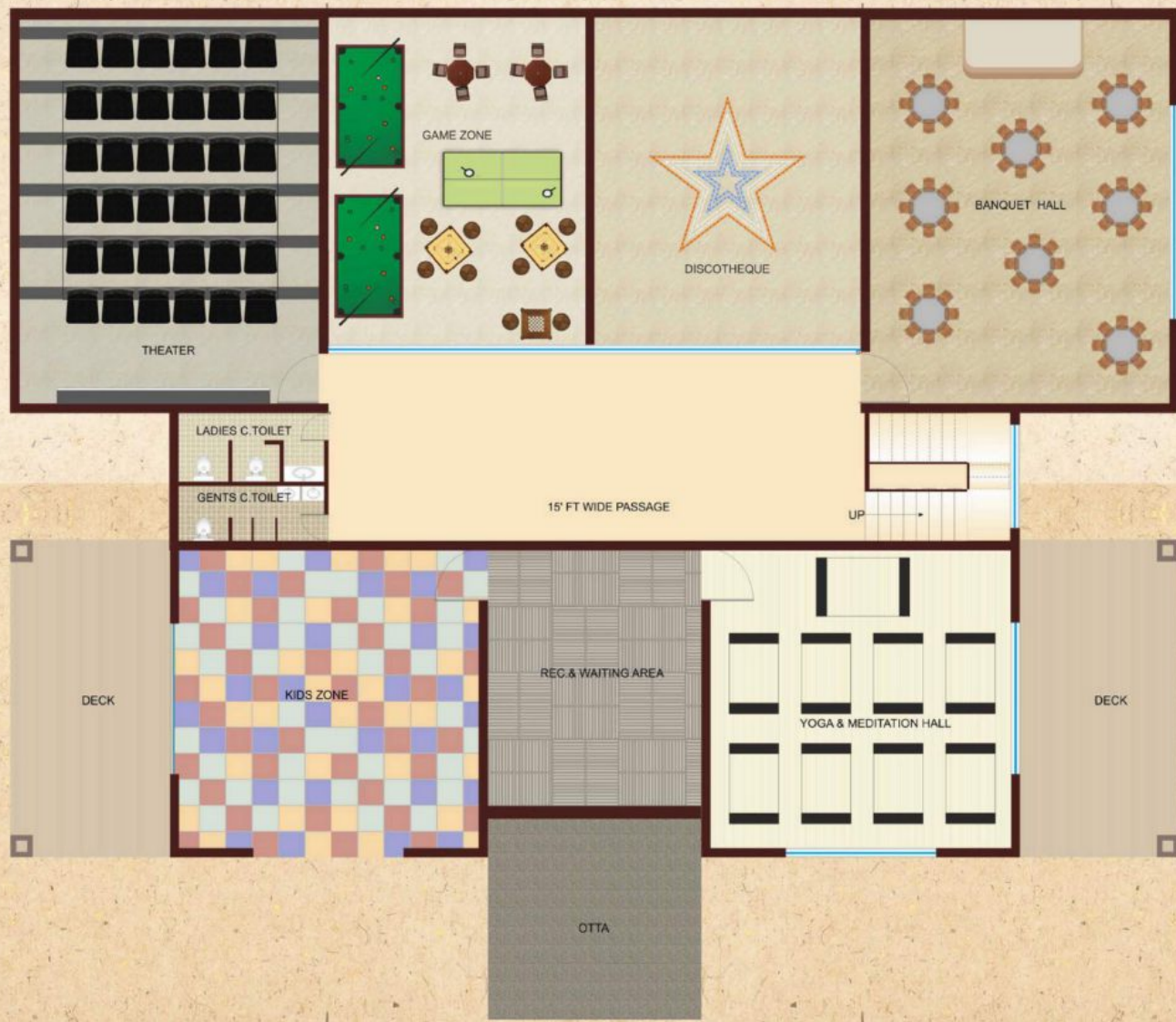
15	1038.07
16	986.22
17	1905.28
18	1038.07
19	1038.07
20	1038.07
21	1761.58
22	1611.83
23	949.83
24	949.83
25	949.83
26	919.84
27	902.40
28	1601.85
29	787.12
30	983.50
31	1002.52
32	1038.22
33	1038.22
34	1038.22
35	1756.78
36	1675.20
37	1014.96
38	1063.65
39	1078.72
40	1044.78
41	1036.74
42	864.82
43	785.81
44	1010.59
45	832.34
46	850.19
47	1312.62

Welcome to
Club Ribera



Reception
Area





Reception Area

Club Ribera







Yoga





Kids
Zone
Zone





Theater



Banquet



Discotheque



The Terrace Lounge
Area







Swimming
Pool



Kids
Pool
Pool



Archery



Activity
Area



Outdoor Play Area





Key Plan



Villa Interiors

LIVING ROOM:

- Sofa Set With Center Table
- Television (Branded)
- Curtains
- Fan

BEDROOMS:

- Double bed with side tables
- Mattresses and pillows with bed sheets
- Wardrobe
- Dressing Table and mirror
- Air condition (Branded)
- Curtains
- Fan

KITCHEN & DINNING:

- Dining Table With Chairs
- Kitchen Platform With Stove
- Crockery Set
- Microwave (Branded)
- Refrigerator (Branded)
- Fan
- R.O Water Plant
- Dustbin

SPECIAL FEATURE:

- Landscape Garden With Villa
- Indoor Aqua Pool With Villa
- Terrace Garden Cum Party Lodge
- Decorative Gazebo In Individual Plot Garden

Villa Specification

STRUCTURE:

- Earthquake Resident Structure.

FLOORING:

- Good Quality Granamite Tiles In All Room.

DOOR:

- Decorative Wooden Main Door with Finishing.
- Other Laminated Flush Door With Granite Frame.

WINDOW:

- Granite Frame With Glass
- Granite Frame with Louvers in Toilet.

KITCHEN:

- Polished Granite Platform With S.S.Sink.

TOILET:

- Anti-Skid Ceramic Tiles in Flooring.
- Ceramic Tiles Dado Up To 7' hts.

PLUMBING:

- Concealed Plumbing with Good Quality Fixture (Jaguar Or Similar).

WALL FINISH:

- Outside - Texture Finish and Double Coat Sand, Face Plaster with Color on Walls.
- Inside - Plaster with Color Putti.

DECK:

- Anti-Skid Tiles In Living Front & Kota Stone Finish Ties In Pool Side.

WATER SUPPLY:

- 24 Hours Portable Water From Bore Well.
- Hot Water System with Geyser in Each Toilet.

ELECTRICAL AND COMMUNICATION:

- Modular Switches, Copper Wiring, Light Poles, Garden Light.
- Power Back Up By Inverter In Each Villa.

Note:

Stamp duty, Registration Charges, GEB, Society, Maintenance charges, & expenses etc. shall be borne by purchaser. * VMT, service Tax as & if applicable, will be borne by purchaser. * Any additional charges or duties levied by government/local authorities during or after the completion of scheme like betterment will be borne by the purchaser. * In interest of continual developments in design & quality of construction, the developer reserves all rights to make any changes in the scheme including: technical specifications, design, planning, layout & all such needs shall be made by such changes. * changes/alteration of any nature including design concept & outlook of the scheme are strictly NOT PERMITTED during or after the completion of the scheme. * This brochure is intended only for display & information of the scheme & does not form part of the legal document.

Amenities



Mini Golf



Cycling



ATV



Basic Drone Flying Course



Tennis Court



Cricket Pitch with Nets and Bowling Machine



Basic Archery



Horse Riding



Volleyball Court



Zoo: Duck, Birds, Rabbit, etc.



Children Play Area



Open Amphitheater with Cinema



Segway



Hover board



Adult Pool



Kids Pool



Outdoor Chess



Party Lawn



Club House



Open Barbecue Area



Kids Zone - Funky Monkey, Toy Room



Steam



Sauna



Jacuzzi



Theater



Banquet Hall



Discotheque



Indoor Games



Billiards/Pool Table



Carrom Board



Chess



Cards Table



Air Hockey



Table Tennis



Cards Room



Lounge area



Terrace Lounge area



Digital Games Room



Yoga & Meditation Hall

General Amenities

- Cabin at entrance gate with security guard.
- High quality rubber molded paver blocks on road.
- Lawn with plants, tree, seating benches, jogging track, well design landscape & decorative lights in garden.

Villa Interiors

LIVING ROOM:

- Sofa Set With Center Table
- Television (Branded)
- Curtains
- Fan

BEDROOMS:

- Double bed with side tables
- Mattresses and pillows with bed sheets
- Wardrobe
- Dressing Table and mirror
- Air condition (Branded)
- Curtains
- Fan.

KITCHEN & DINNING:

- Dining Table With Chairs
- Kitchen Platform With Stove
- Crockery Set
- Microwave (Branded)
- Refrigerator (Branded)
- Fan
- R.O Water Plant
- Dustbin

SPECIAL FEATURE:

- Landscape Garden With Villa
- Indoor Aqua Pool With Villa
- Terrace Garden Cum Party Lodge
- Decorative Gazebo In Individual Plot Garden

Villa Specification

STRUCTURE:

- Earthquake Resistant Structure.

FLOORING:

- Good Quality Granamite Tiles in All Room.

DOOR:

- Decorative Wooden Main Door with Finishing.
- Other Laminated Flush Door With Granite Frame.

WINDOW:

- Granite Frame With Glass
- Granite Frame with Louvers in Toilet.

KITCHEN:

- Polished Granite Platform With S.S Sink.

TOILET:

- Anti-Skid Ceramic Tiles in Flooring
- Ceramic Tiles Dado Up To 7 Hts.

PLUMBING:

- Concealed Plumbing with Good Quality Fixture (Jaguar Or Similar).

WALL FINISH:

- Outside - Texture Finish and Double Coat Sand, Face Plaster with Color on Walls.
- Inside - Plaster with Color Putti.

DECK:

- Anti-Skid Tiles in Living Front & Kota Stone Finish Tiles in Pool Side.

WATER SUPPLY:

- 24 Hours Portable Water From Bore Well.
- Hot Water System with Geyser in Each Toilet.

ELECTRICAL AND COMMUNICATION:

- Modular Switches, Copper Wiring, Light Poles, Garden Light.
- Power Back Up By Inverter In Each Villa.

Note:

Stamp duty, Registration Charges, OEB, Society, Maintenance charges, & expenses etc. Shall be borne by purchaser. * VAT, service Tax as & if applicable, will be borne by purchaser. * Any additional charges or duties levied by government/local authorities during or after the completion of external like settlement will be borne by the purchaser. * In interest of control of developments in design & quality of construction, the developer reserves all rights to make any changes in the scheme including technical specifications, designs, planning, layout & all purchase shall be held by such changes. * Changes/alteration of any nature including design concept & outlook of the scheme are strictly NOT PERMITTED during or after the completion of the scheme. * This brochure is intended only for easy display & information of the scheme & does not form part of the legal document.